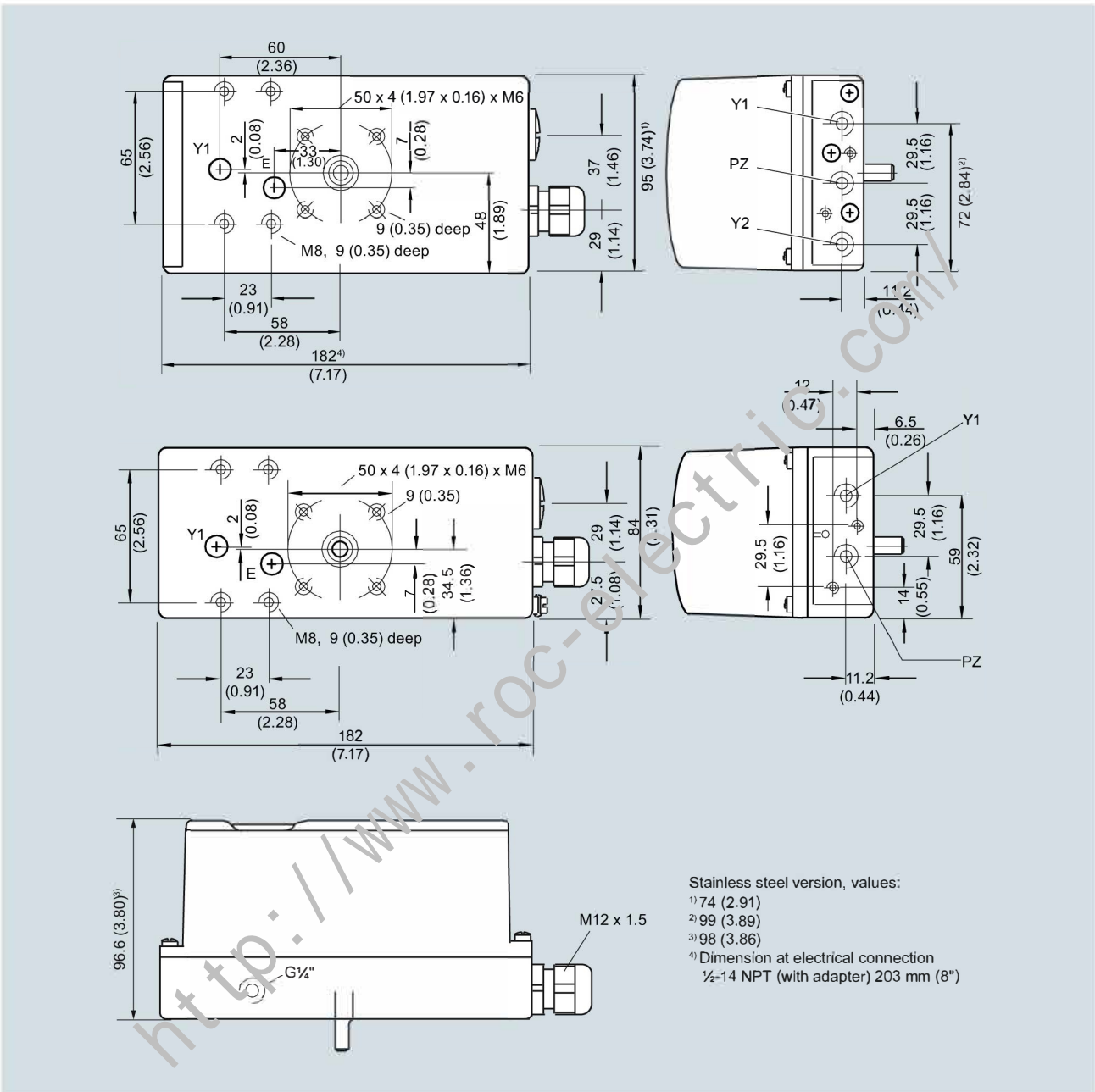


Dimensional drawings

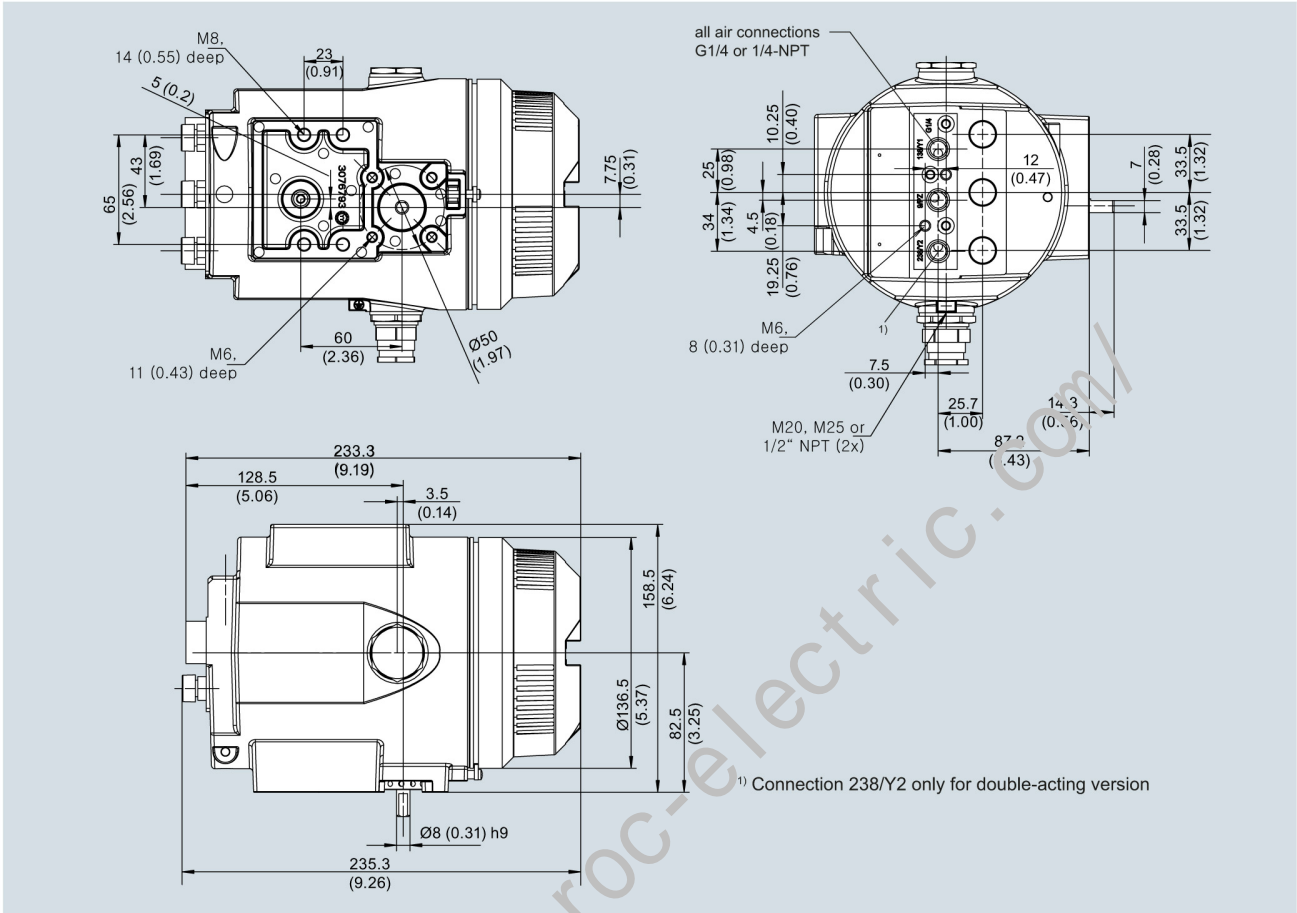


Makrolon and stainless steel enclosure (top), aluminum enclosure (center), Makrolon, stainless steel and aluminum enclosure (bottom), dimensions in mm (inch)

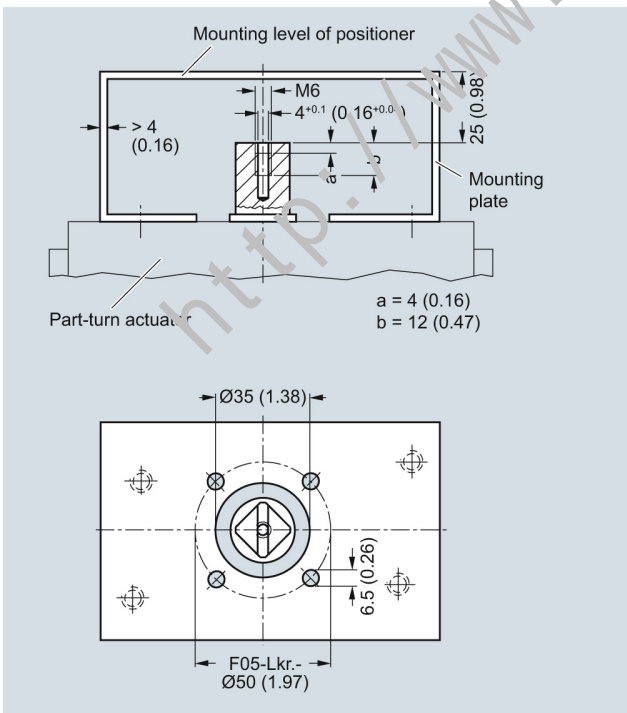
# Positioners SIPART PS2

## Dimensional drawings

5



Flameproof enclosure left, dimensions in mm (inch)

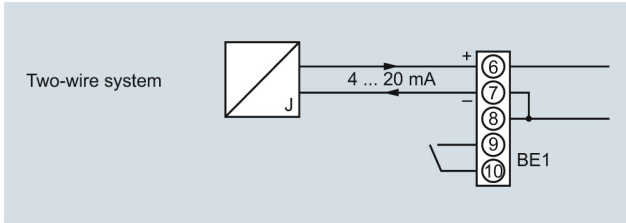


Mounting onto part-turn actuators; mounting consoles (scope of delivery of actuator manufacturer), extract from VDI/VDE 3845, dimensions in mm (inch)

**Schematics**

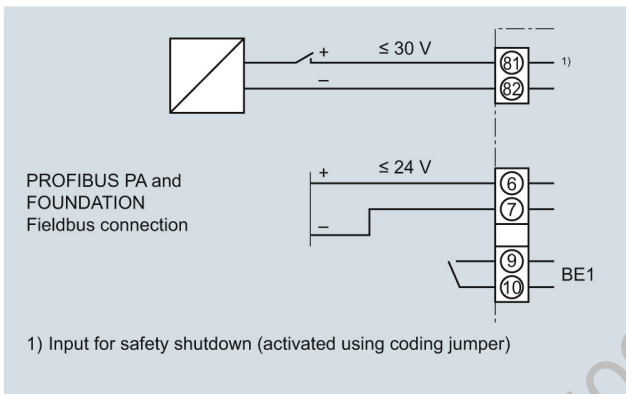
**Electric connection of 2-wire devices (6DR50.. and 6DR51..)**

Devices of types 6DR50.. and 6DR51.. are operated in a 2-wire system.



SIPART PS2 electropneumatic positioner, input circuit for 6DR50.. and 6DR51..

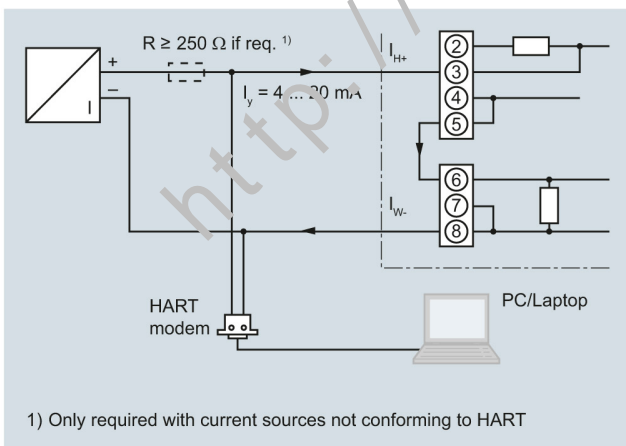
**Electric connection of PROFIBUS PA device (6DR55..) and FOUNDATION Fieldbus device (6DR56..)**



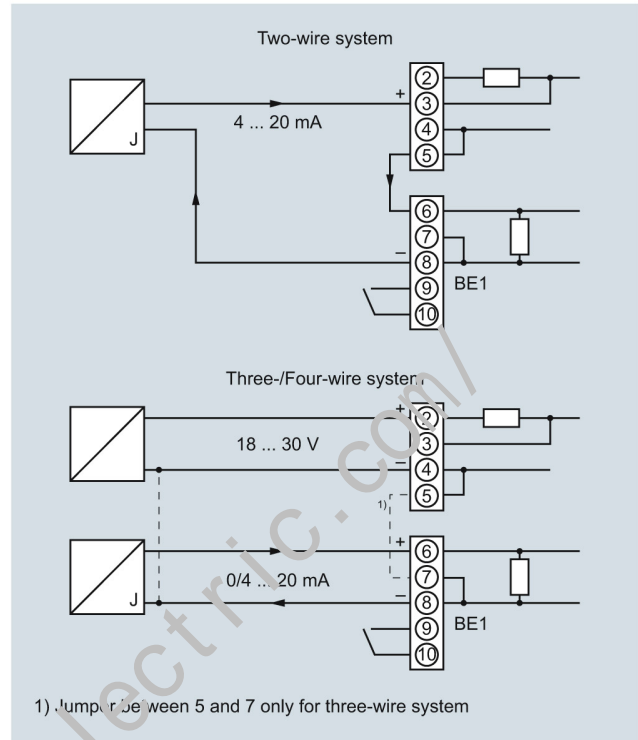
SIPART PS2 PA and SIPART PS2 FF electropneumatic positioner, input circuit for 6DR55.. and 6DR56..

**Electric connection of 2-, 3- and 4-wire device (6DR52.. and 6DR53..)**

Devices of types 6DR52.. and 6DR53.. can be operated in a 2-, 3- and 4-wire system.



SIPART PS2 electropneumatic positioner, example of connection for communication through HART for 6DR52..



SIPART PS2 electropneumatic positioner, input circuits for 6DR52.. and 6DR53..

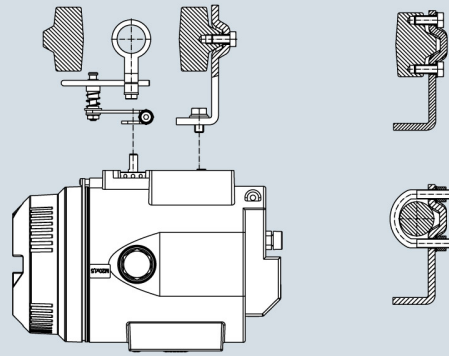
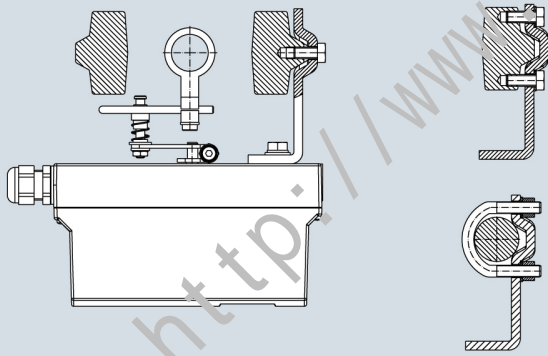
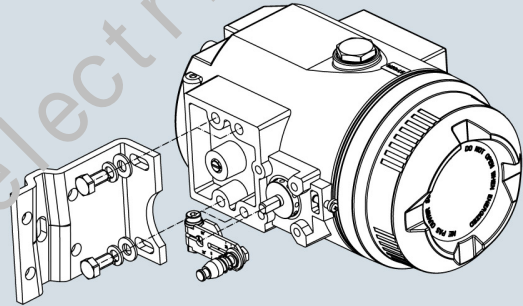
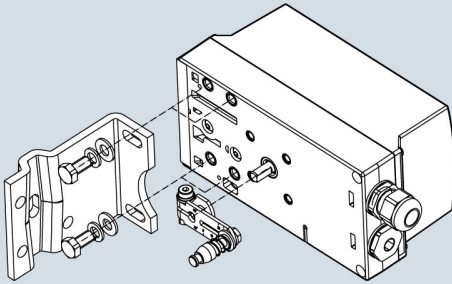
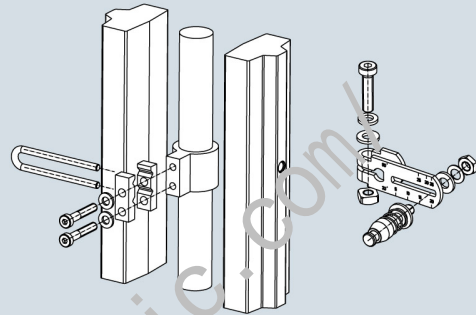
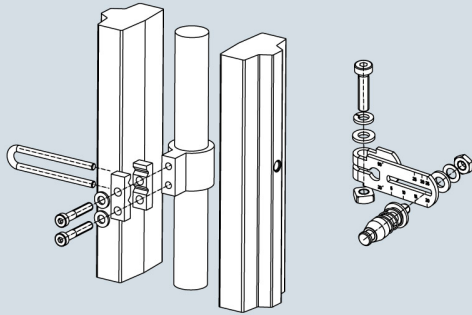
# Positioners

## SIPART PS2

### Mounting kit

#### Mounting kit for NAMUR linear actuators

- 1 mounting bracket
- 2 mounting prisms
- 1 U-bracket
- 1 lever arm with adjustable pick-up roll
- 2 U-bolts
- Various screws and lock washers



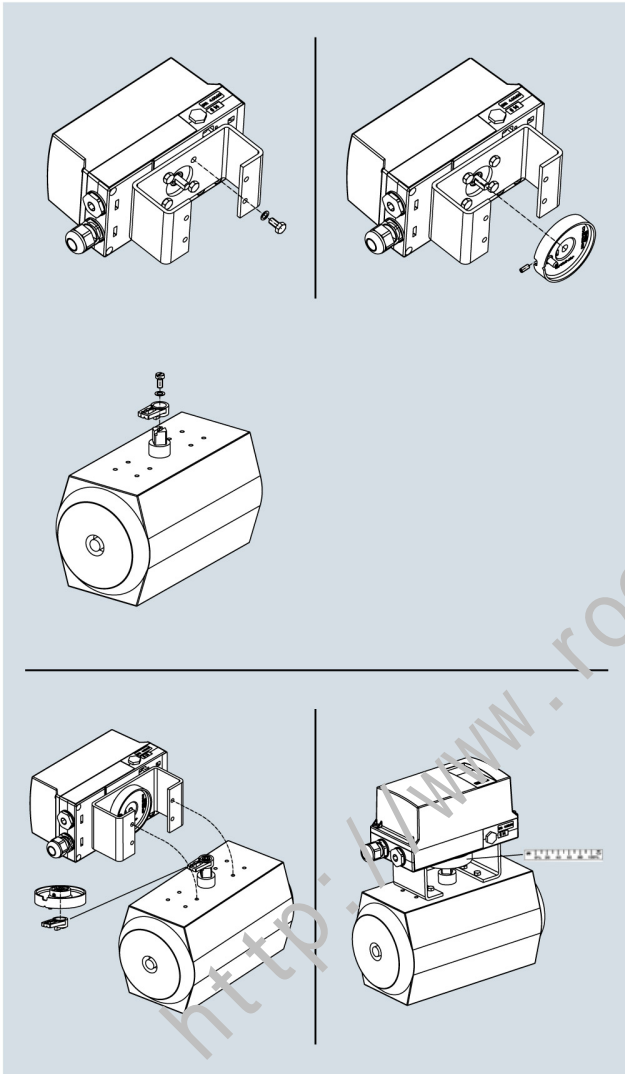
Mounting of SIPART PS2 on linear actuators

Mounting of SIPART PS2 in flameproof aluminium enclosure on linear actuators

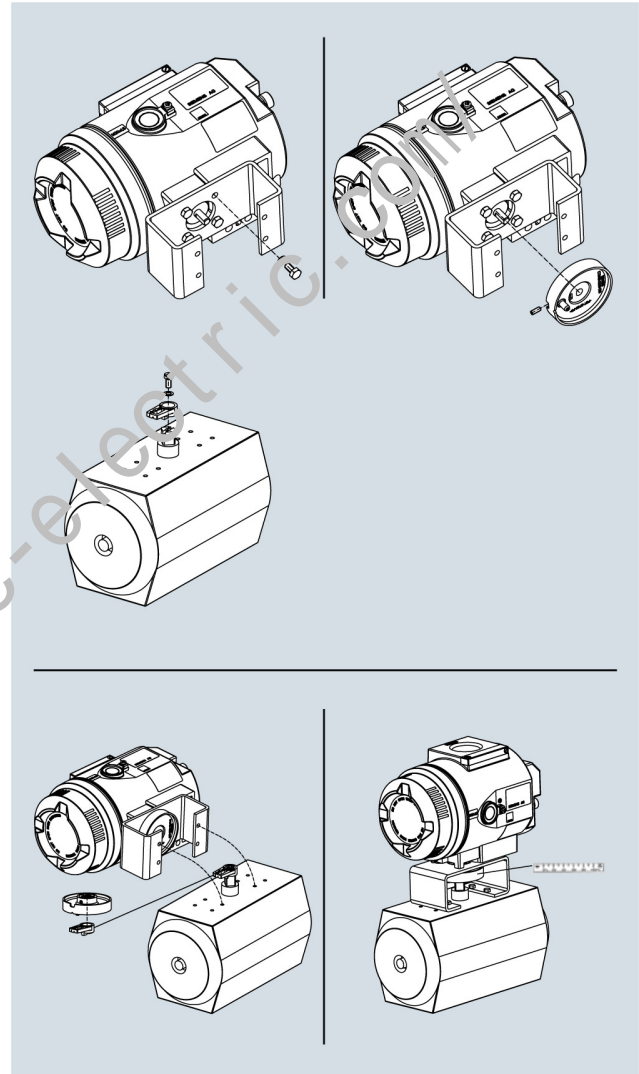
**Mounting kit for NAMUR part-turn actuators**

- 1 coupling wheel
- 1 driver pin
- 8 scales
- 1 pointer
- Various screws and lock washers

Caution: The mounting consoles and the screws for mounting onto the part-turn actuator are not included in the scope of delivery and must be provided by the customer (see "Technical specifications")



Mounting of SIPART PS2 on part-turn actuators



Mounting of SIPART PS2 in flameproof aluminium enclosure on part-turn actuators

**More information****Special versions**

On request

# Positioners

Notes

5

<http://www.roc-electric.com/>